

## EBeam1 Rotation Fixture Standard Operating Procedure

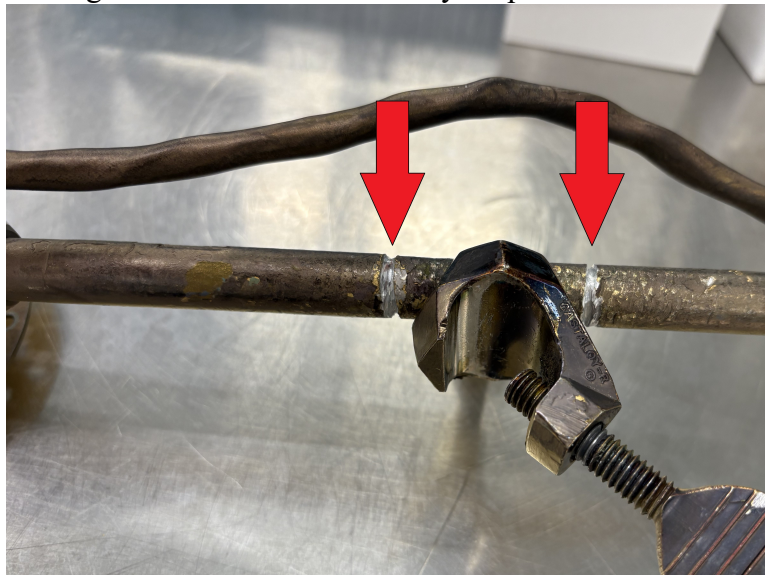
1. Install Rotation Fixture to front right post, routing the cable across to the front left post, and then down as seen in the following illustration.

**DO NOT** leave excess cable between the posts as it could snag on the bell jar.

**DO NOT** allow the cable to cross over the high voltage feed throughs or damage can occur.



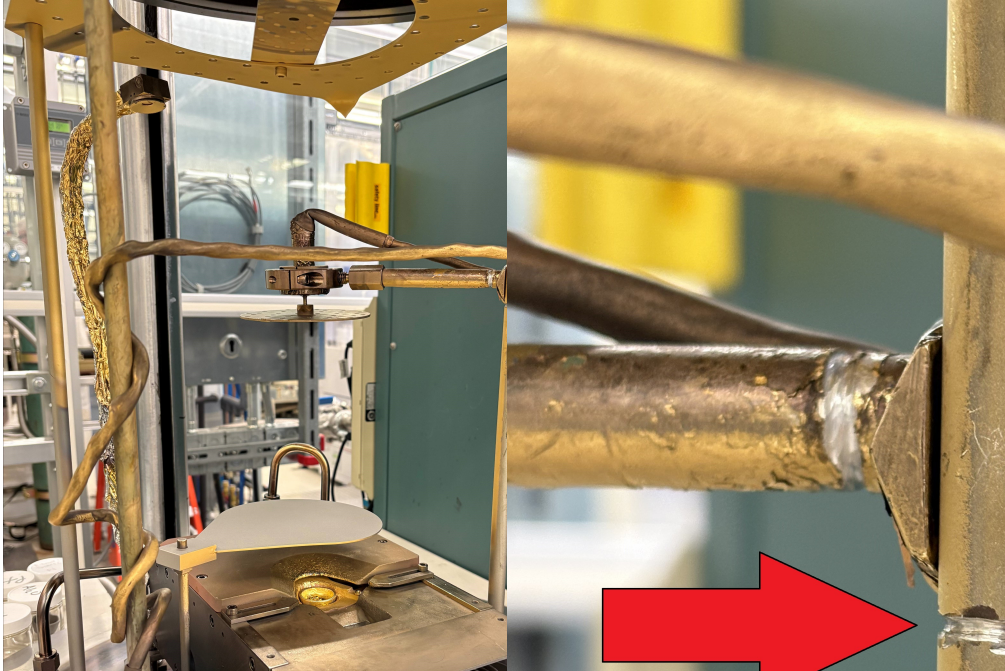
2. **Ensure that the fixture clamp is located between the grooves on the shaft for proper alignment.** Improper alignment can cause damage to both the chamber and your parts.



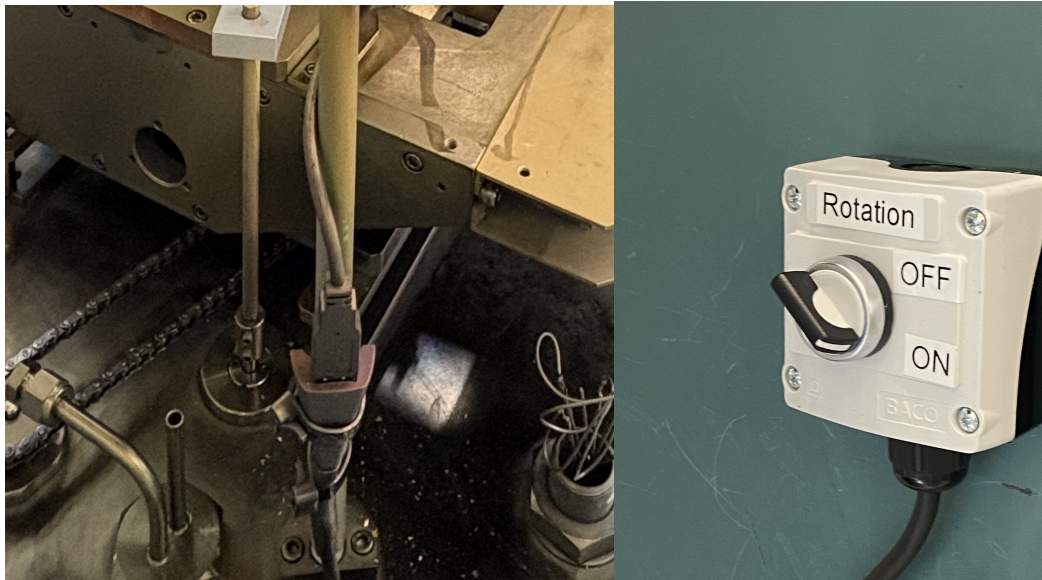
## EBeam1 Rotation Fixture Standard Operating Procedure

- Typical installation will have the Rotation Fixture mounted as high as possible in the chamber in order to be as close as possible to the standard tooling factor, but some processes will require lowering the Rotation Fixture (higher dep rates). If you lower the height of the Rotation Fixture, **DO NOT** mount the Rotation fixture clamp lower than the groove on the front right post. (See Pictures) **ONLY 4inch Fixture Plates** are to be used in a lowered position. 6inch Fixture Plates will block the crystal sensor.

Mounting the Rotation fixture lower than the groove will result in the crystal sensor being blocked which can lead to damage to the EBeam and excessive deposit on your parts.



- Plug in the USB cable.



- Turn the switch ON to start rotation.
- When the deposition is complete, turn the switch off to turn off the rotation. Then remove the Rotation Fixture in reverse order as it was installed.