

Automatic
Manual

Recipe Name AL203 300AL203 300
Data Log Interval 00 00 00 125
Created 15-Aug-12 5:59:50 pm
Recipe Length 0000:07:28.523

New
Load
Save
Run

Step Library
Chamber 1

Edit
New
Copy
Delete

- 1. pump
- 2. pre heat
- 3. set up pressure
- 4. Repeat 26
- 5. dose TMA
- 6. Purge TMA
- 7. Divert Argon
- 8. O2 Plasma
- 9. Post Plasma purge
- 10. Loop
- 11. pump
- *

Empty area for step details or chamber configuration.

Process Step Editor

Step Name

OK Cancel

START STOP PAUSE

STEP TIME

PUMP TO PRESSURE

IGNORE TOLERANCE

LOG INTERVAL

Total Steps:
 Recipe Length:
 Total Cycles:
 Completed: Time Left: Completed:

PROCESS MODE
 TURBO ROUGH

TABLE HEATER Deg.C
 HEATER READY

APC CONTROLLER

Set Pressure:
 Chamber Pressure:

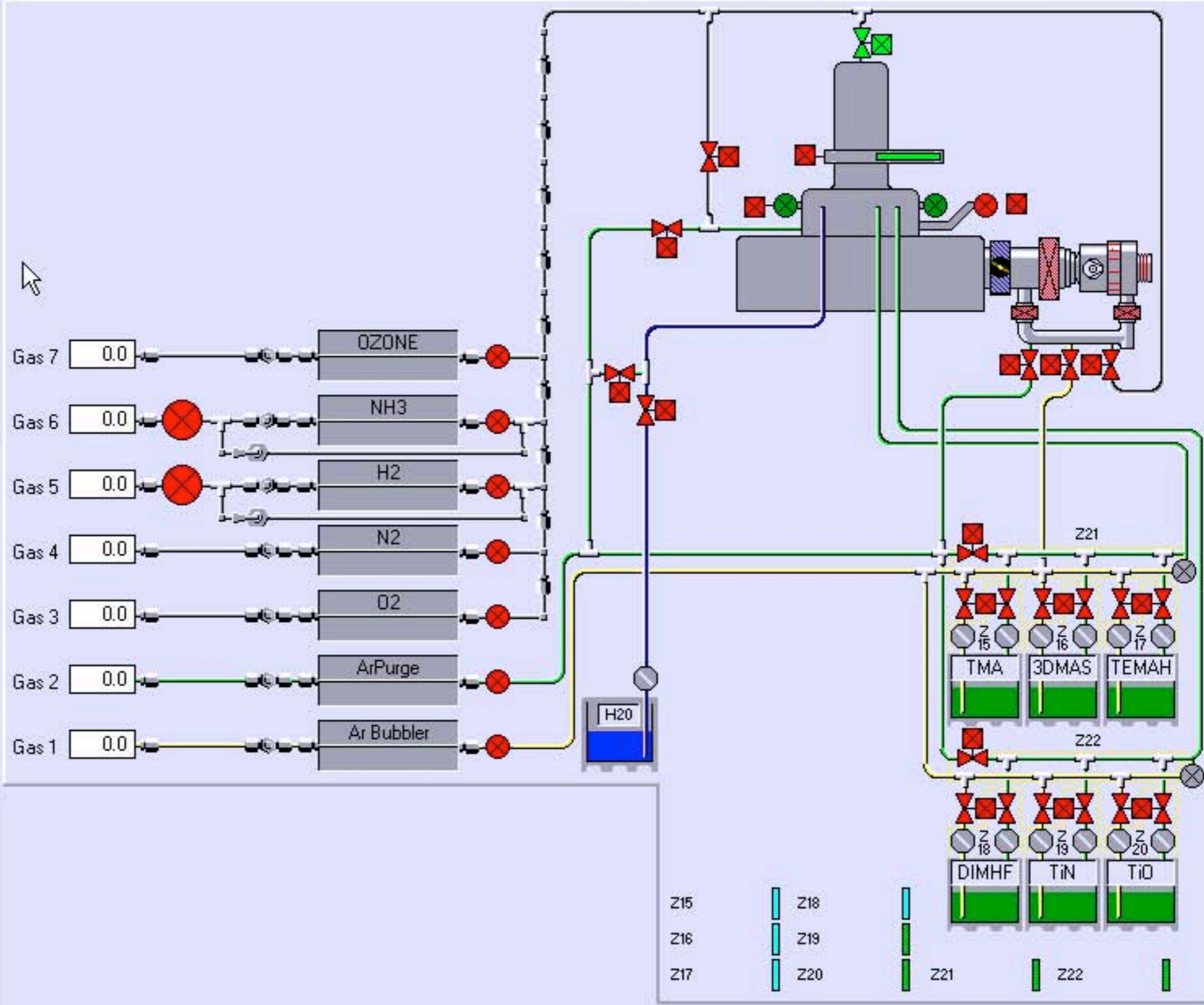
Set Position:
 Valve Position:

Pressure Position

RF GENERATOR
 Forward Power:
 Reflected Power:

RF AUTOMATCH
 CAPACITOR 1: CAPACITOR 2:

AUTO MANUAL HOLD



Process Step Editor

Step Name

OK Cancel

START STOP PAUSE

STEP TIME

PUMP TO PRESSURE

IGNORE TOLERANCE

LOG INTERVAL

Total Steps:
 Recipe Length:
 Total Cycles:

PROCESS MODE

TABLE HEATER Deg.C

APC CONTROLLER

Set Pressure:
 Chamber Pressure:

Set Position:
 Valve Position:

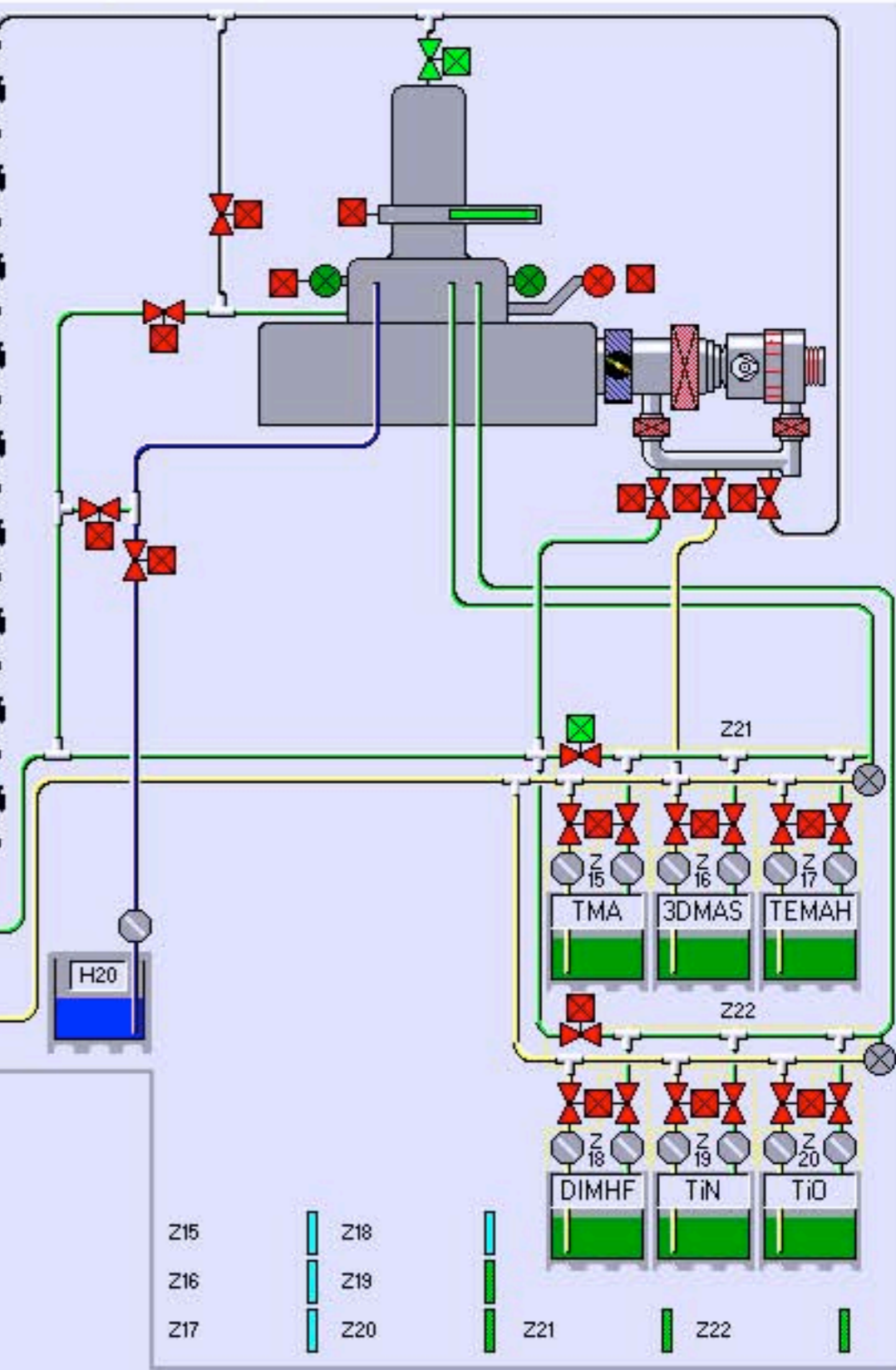
Pressure Position

RF GENERATOR
 Forward Power:
 Reflected Power:

RF AUTOMATCH
 CAPACITOR 1: CAPACITOR 2:

AUTO MANUAL HOLD

Gas 7	<input type="text" value="0.0"/>	<input type="checkbox"/>	OZONE	<input type="checkbox"/>
Gas 6	<input type="text" value="0.0"/>	<input checked="" type="checkbox"/>	NH3	<input type="checkbox"/>
Gas 5	<input type="text" value="0.0"/>	<input checked="" type="checkbox"/>	H2	<input type="checkbox"/>
Gas 4	<input type="text" value="0.0"/>	<input type="checkbox"/>	N2	<input type="checkbox"/>
Gas 3	<input type="text" value="0.0"/>	<input type="checkbox"/>	O2	<input type="checkbox"/>
Gas 2	<input type="text" value="100.0"/>	<input type="checkbox"/>	ArPurge	<input type="checkbox"/>
Gas 1	<input type="text" value="0.0"/>	<input type="checkbox"/>	Ar Bubbler	<input type="checkbox"/>



Process Step Editor

Step Name

START STOP PAUSE

STEP TIME

PUMP TO PRESSURE

IGNORE TOLERANCE

LOG INTERVAL

Total Steps	Recipe Length	Total Cycles
<input type="text"/>	<input type="text"/>	<input type="text"/>
Completed	Time Left	Completed
<input type="text"/>	<input type="text"/>	<input type="text"/>

PROCESS MODE

TURBO ROUGH

TABLE HEATER Deg.C

HEATER READY

APC CONTROLLER

Set Pressure
 Chamber Pressure

Set Position
 Valve Position

Pressure Position

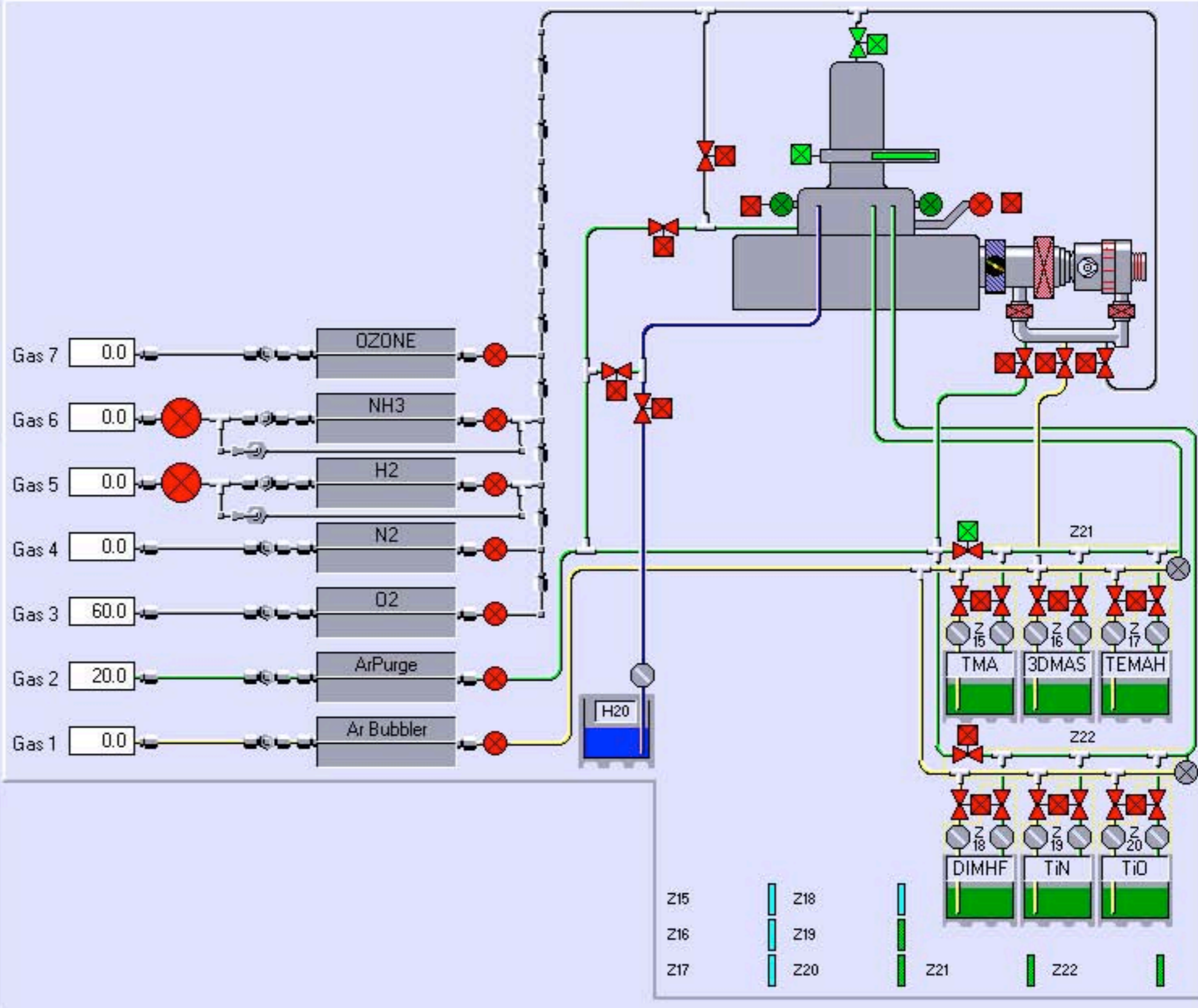
RF GENERATOR

Forward Power
 Reflected Power

RF AUTOMATCH

CAPACITOR 1 CAPACITOR 2

AUTO MANUAL HOLD



Process Step Editor

Step Name

START STOP PAUSE

STEP TIME

PUMP TO PRESSURE

IGNORE TOLERANCE

LOG INTERVAL

Total Steps:
 Recipe Length:
 Total Cycles:

Completed: Time Left: Completed:

PROCESS MODE

TABLE HEATER Deg.C

APC CONTROLLER

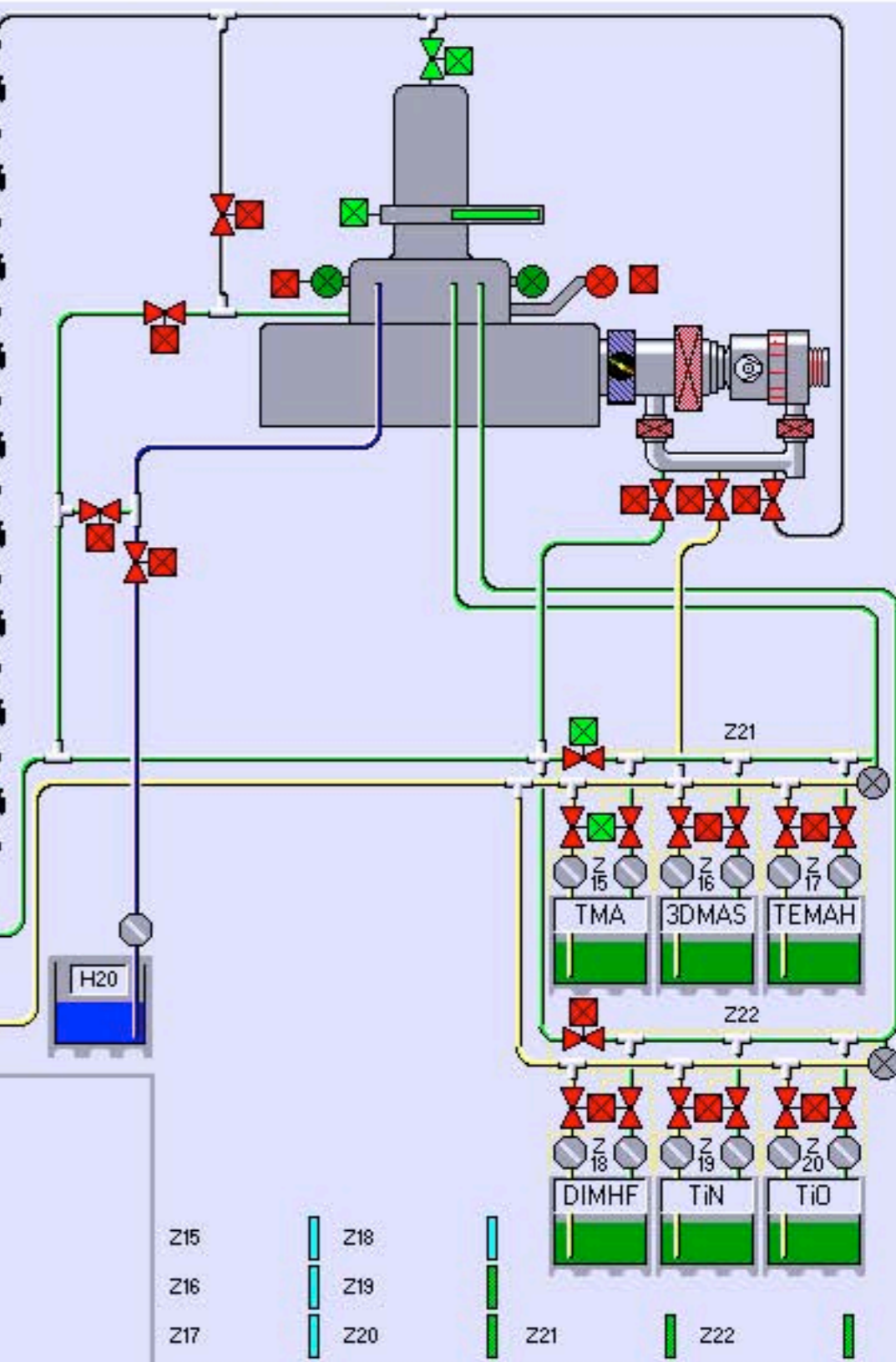
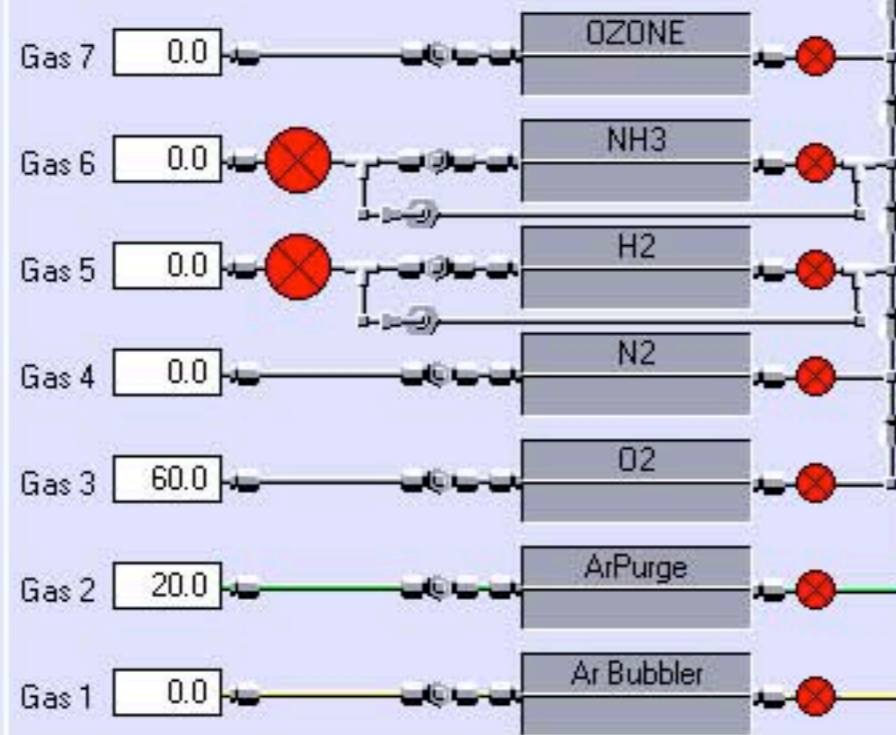
Set Pressure:
 Chamber Pressure:

Set Position:
 Valve Position:

RF GENERATOR
 Forward Power:
 Reflected Power:

RF AUTOMATCH

CAPACITOR 1: CAPACITOR 2:



Process Step Editor

Step Name

OK

Cancel

START STOP PAUSE

PUMP TO PRESSURE
7.50e-09

STEP TIME
00 00 01 000

IGNORE TOLERANCE

LOG INTERVAL
00 00 00 125

Total Steps:

Recipe Length:

Total Cycles:

PROCESS MODE

TURBO ROUGH

TABLE HEATER Deg.C

HEATER READY

APC CONTROLLER

Set Pressure:
Chamber Pressure

Set Position:
Valve Position

Pressure Position

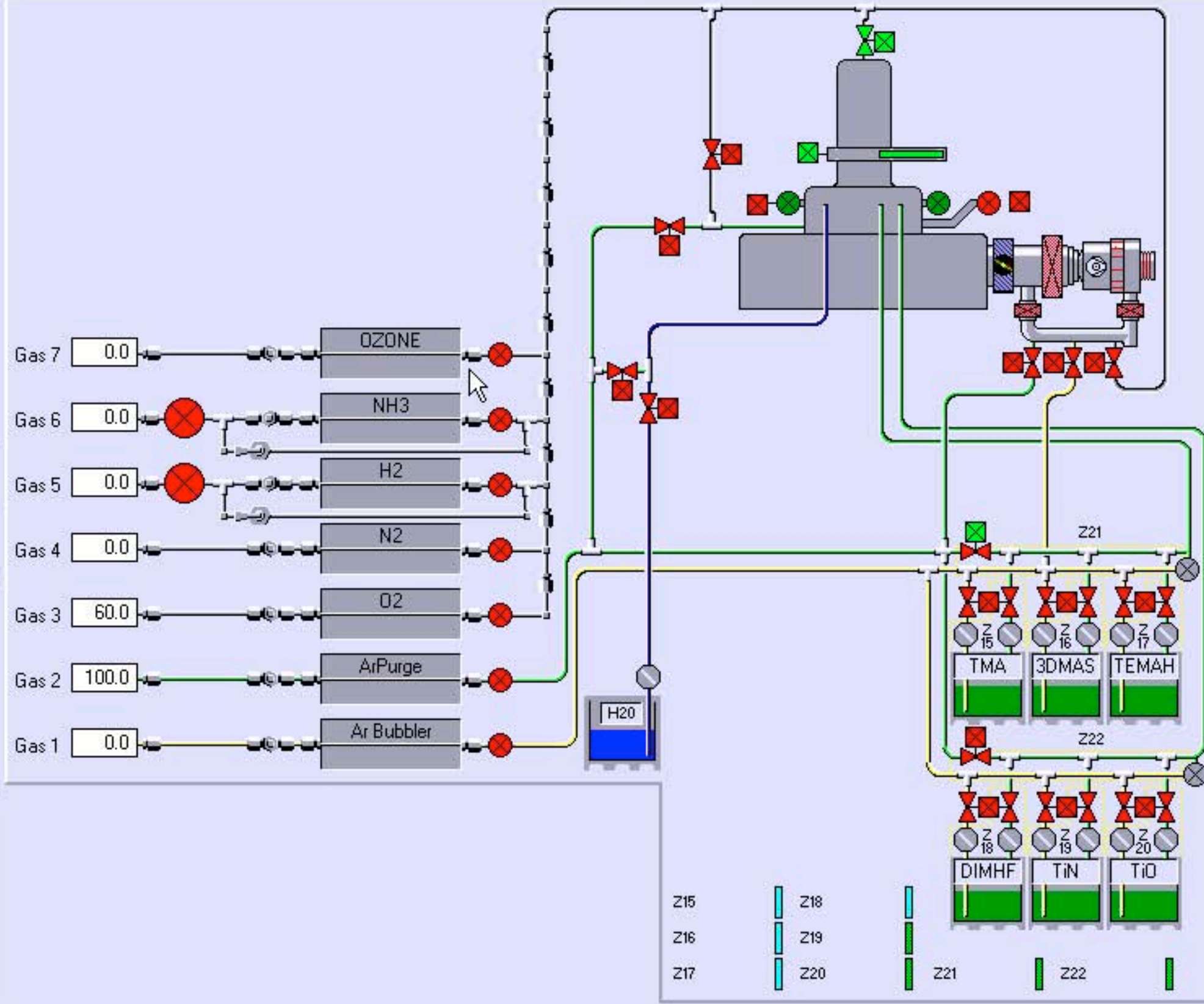
RF GENERATOR

Forward Power:
Reflected Power

RF AUTOMATCH

CAPACITOR 1: CAPACITOR 2:

AUTO MANUAL HOLD



Process Step Editor

Step Name

START STOP PAUSE

STEP TIME

PUMP TO PRESSURE

IGNORE TOLERANCE

LOG INTERVAL

Total Steps	Recipe Length	Total Cycles
<input type="text"/>	<input type="text"/>	<input type="text"/>
Completed	Time Left	Completed
<input type="text"/>	<input type="text"/>	<input type="text"/>

PROCESS MODE

TURBO ROUGH

TABLE HEATER Deg.C

HEATER READY

APC CONTROLLER

Set Pressure	Set Position
<input type="text" value="20.0"/>	<input type="text" value="0.0"/>
Chamber Pressure	Valve Position
<input type="text"/>	<input type="text"/>

Pressure Position

RF GENERATOR

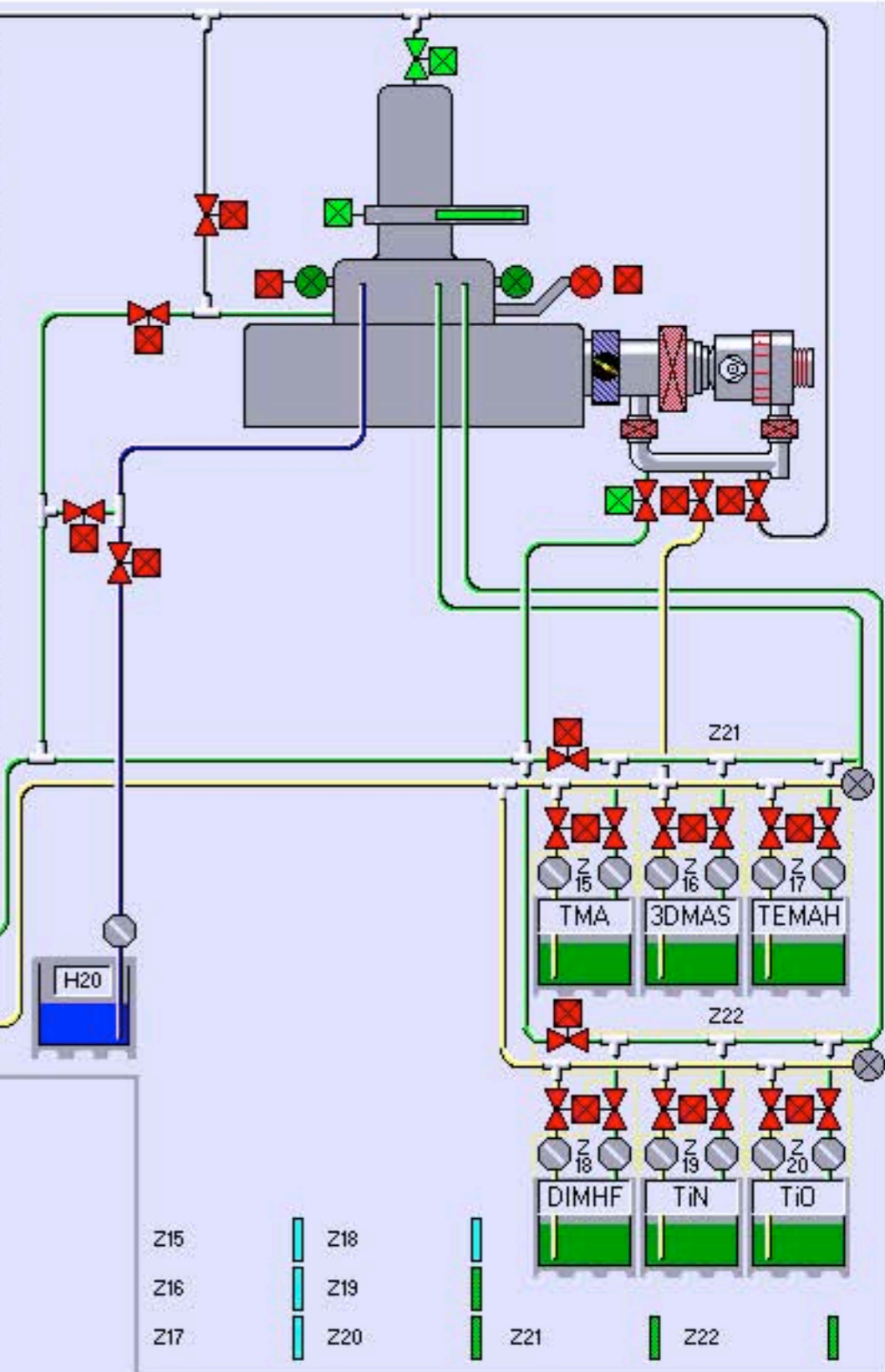
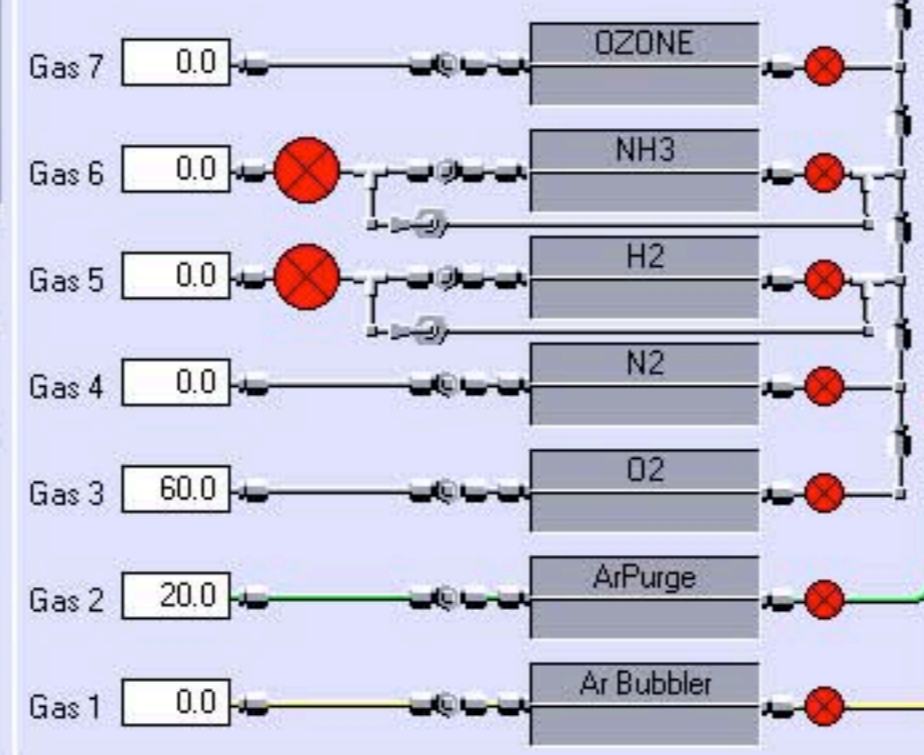
Forward Power

Reflected Power

RF AUTOMATCH

CAPACITOR 1	CAPACITOR 2
<input type="text" value="0.0"/>	<input type="text" value="0.0"/>

AUTO MANUAL HOLD



Process Step Editor

Step Name

START STOP PAUSE

STEP TIME

PUMP TO PRESSURE

IGNORE TOLERANCE

LOG INTERVAL

Total Steps	Recipe Length	Total Cycles
<input type="text" value="Completed"/>	<input type="text" value="Time Left"/>	<input type="text" value="Completed"/>

PROCESS MODE

TURBO ROUGH

TABLE HEATER Deg.C

HEATER READY

APC CONTROLLER

Set Pressure	Set Position
<input type="text" value="20.0"/>	<input type="text" value="0.0"/>
Chamber Pressure	Valve Position

Pressure Position

RF GENERATOR

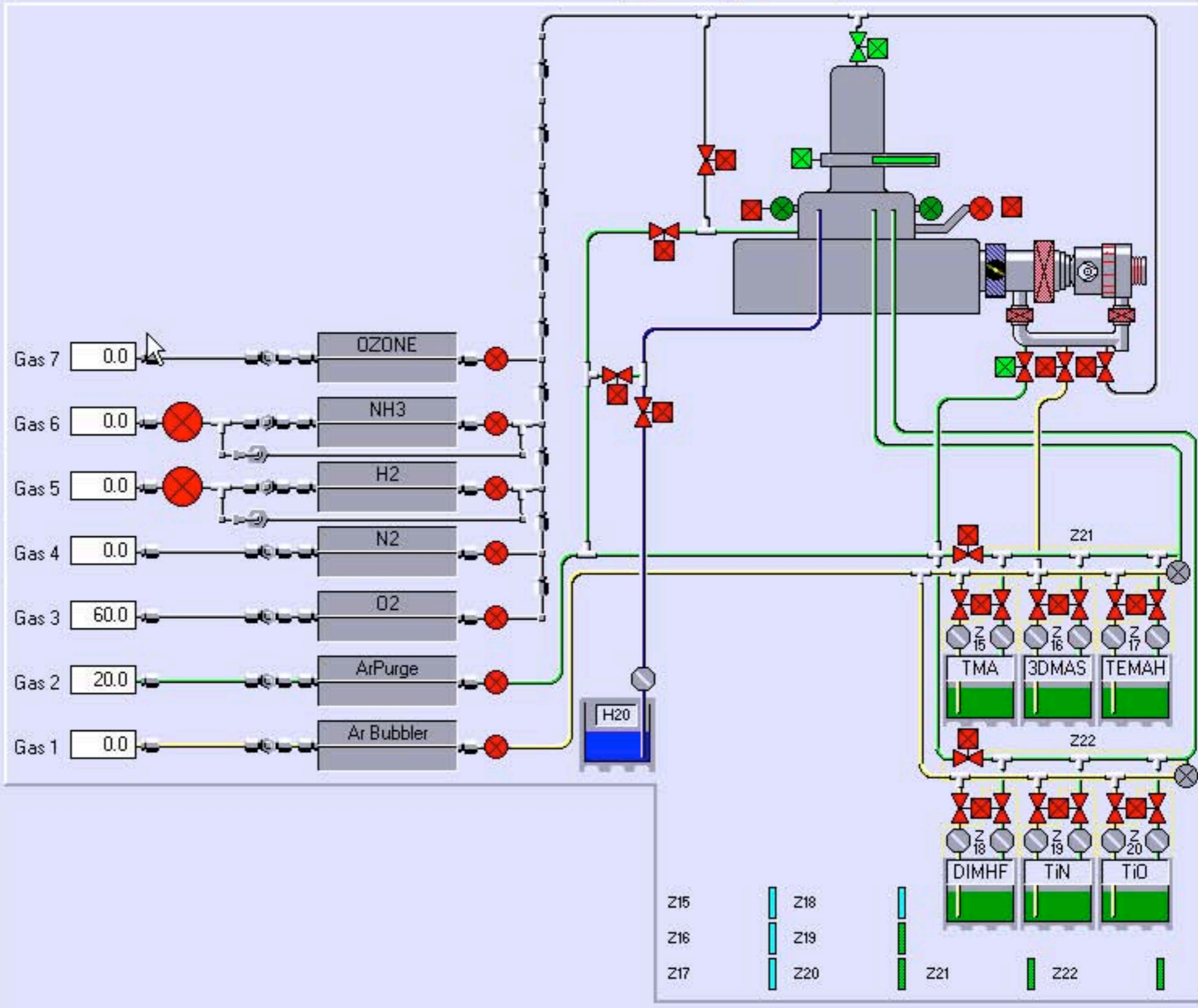
Forward Power

Reflected Power

RF AUTOMATCH

CAPACITOR 1	CAPACITOR 2
<input type="text" value="0.0"/>	<input type="text" value="0.0"/>

AUTO MANUAL HOLD



Process Step Editor

Step Name

OK Cancel

START STOP PAUSE

STEP TIME

PUMP TO PRESSURE

IGNORE TOLERANCE

LOG INTERVAL

Total Steps:
 Recipe Length:
 Total Cycles:

PROCESS MODE
 TURBO ROUGH

TABLE HEATER Deg.C
 HEATER READY

APC CONTROLLER

Set Pressure:
 Chamber Pressure:

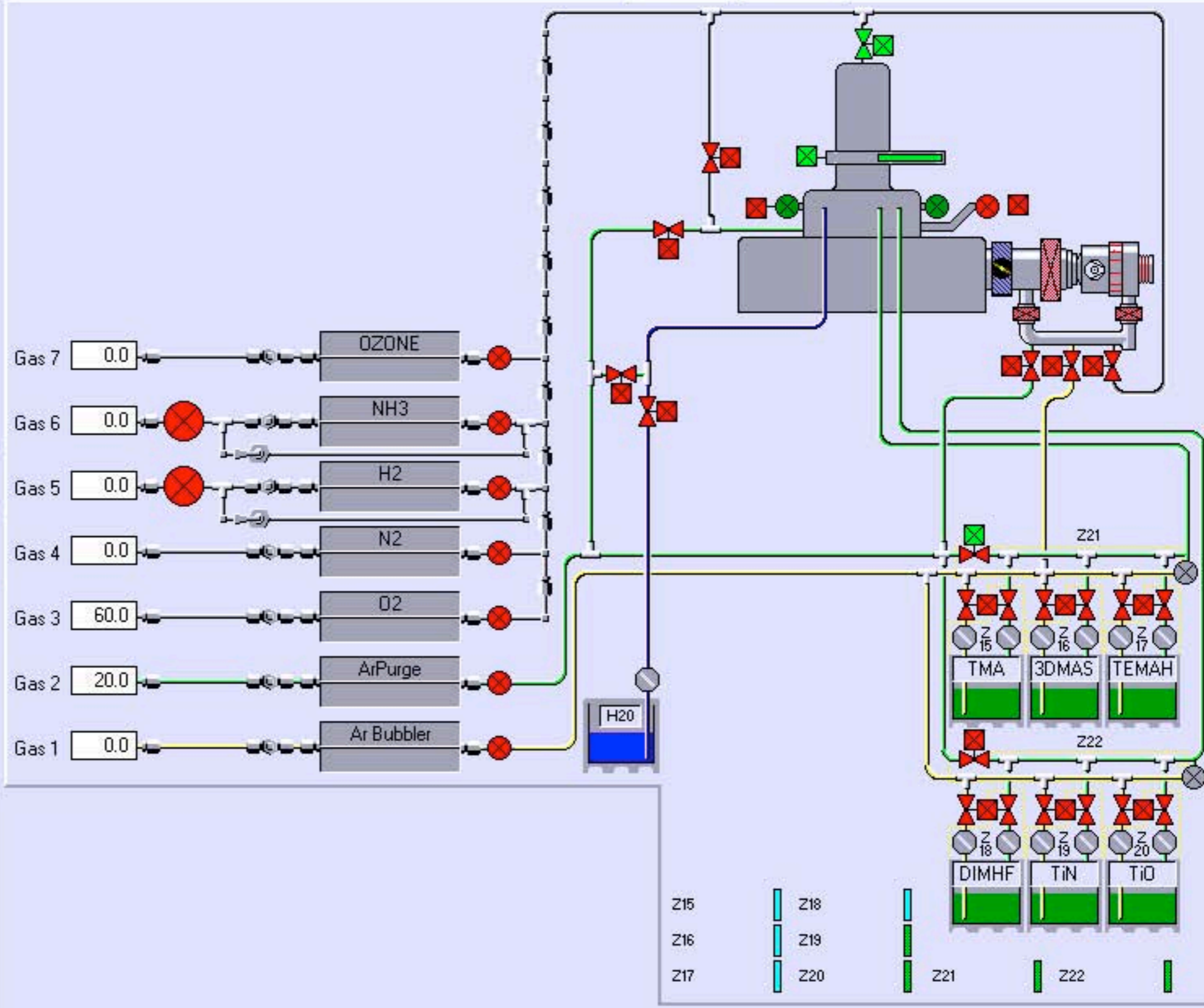
Set Position:
 Valve Position:

Pressure Position

RF GENERATOR
 Forward Power:
 Reflected Power:

RF AUTOMATCH
 CAPACITOR 1: CAPACITOR 2:

AUTO MANUAL HOLD



Process Step Editor

Step Name

OK Cancel

START STOP PAUSE

STEP TIME

PUMP TO PRESSURE

IGNORE TOLERANCE

LOG INTERVAL

Total Steps:
 Completed:

Recipe Length:
 Time Left:

Total Cycles:
 Completed:

PROCESS MODE

TURBO ROUGH

TABLE HEATER Deg.C

HEATER READY

APC CONTROLLER

Set Pressure:
 Chamber Pressure:

Set Position:
 Valve Position:

Pressure Position

RF GENERATOR

Forward Power:
 Reflected Power:

RF AUTOMATCH

CAPACITOR 1: CAPACITOR 2:

AUTO MANUAL HOLD

