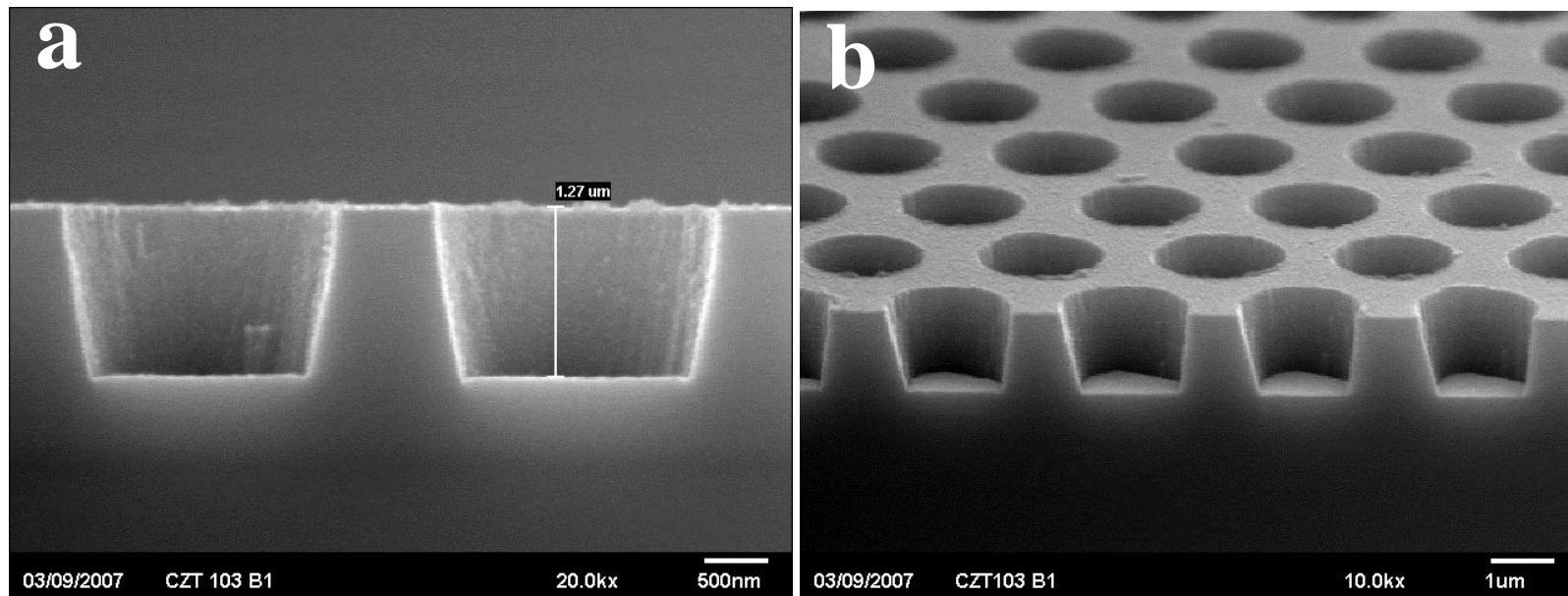


CZT (CdZnTe) Etching using RIE#2 Etcher

Recipe: 6 CYCLES OF (MHA= 3/24/3 SCCM, 45mT, 500V, 10min + O₂= 20 SCCM, 50mT, 200V, 5min)

Net Etch Rate ~ 21 nm/min

Figure 1 (a) CZT Etch Profile (Total Etch Depth=1.27 μ m); (b) Tilting view of etched CZT holes.



Acknowledgements: The above SEM pictures are provided by Douglas Hobbs of Telaztec, Inc.